



**Wireless Optical  
Rechargeable  
Full-size Notebook  
Mouse**

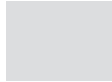


Visit our Website at [www.targus.com](http://www.targus.com) Features and specifications subject to change without notice. © 2007 Targus Group International, Inc. and Targus, Inc.

AMW22US / 410-0889-001C



**USER GUIDE**



PMS Black  
15%



PMS Black  
100%

# TARGUS WIRELESS OPTICAL RECHARGEABLE FULL-SIZE NOTEBOOK MOUSE

## Introduction

Congratulations on your purchase of the Targus wireless optical rechargeable full-size notebook mouse. The ergonomic design provides maximum comfort for both left and right-handed users. This mouse features wireless technology that allows for a clutter-free workspace and the rechargeable function eliminates down-time.

This product contains:

- Full-size notebook mouse
- USB receiver
- Charging cable
- 2 x AA rechargeable batteries
- User guide

## System Requirements

### Hardware

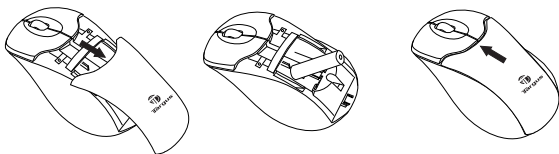
- PC
- USB interface

### Operating System

- Windows® 98SE/2000/Me/XP
- Windows Vista™
- Mac OS X (10.x or greater)

## Installing the Batteries

- 1 Remove the battery cover from the top of the mouse.
- 2 Insert the supplied batteries, making sure that the positive (+) and negative (-) ends of each battery match the polarity indicators inside the battery housing.
- 3 Slide the battery cover back into place until it clicks into position.



**NOTE:** You must re-establish the connection link every time you change the batteries.

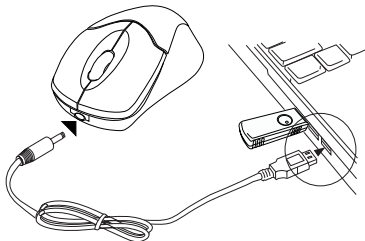


**WARNINGS:** When replacing the batteries, you may use alkaline or other heavy-duty NiMH batteries. Never use an alkaline with a NiMH battery in a device. Do not mix alkaline and NiMH batteries. Also, avoid mixing new and used batteries.

**NOTE:** Use only rechargeable batteries (supplied) when trying to utilize the recharging function.

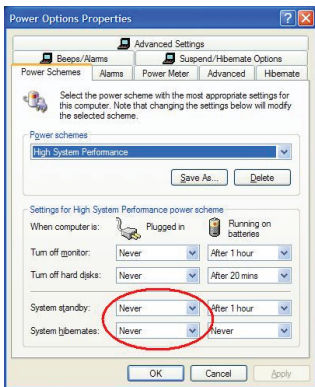
## Using the Recharging feature

This mouse is equipped with a battery recharging feature. Please refer to the diagram below. The mouse still functions wirelessly while recharging.



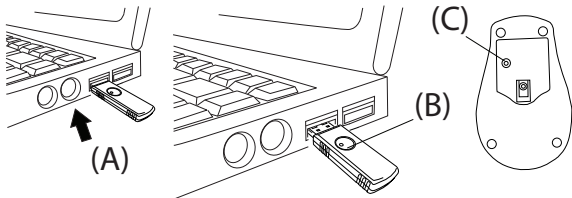
## Operating Notes for Wireless Mice with Recharging Feature via USB Cable

1. Install the included batteries and charge for at least 8 hours before use. And please make sure only rechargeable batteries (the ones that come with your product) are used.
2. Your computer needs to stay powered on for the mouse to charge. Follow these steps to prevent your computer from going in to Standby or Hibernate:
  - a) Click "Start"
  - b) Click "Control Panel"
  - c) Click "Performance and Maintenance" (Skip in Classic View)
  - d) Click "Power Options"
  - e) Make sure "System Standby:" and "System Hibernates:" under "Plugged in" are set to "Never"
3. If you use your notebook computer's LCD monitor, please do not close the lid. (Please ignore this step if you use an external monitor with your notebook lid closed.)
4. If your mouse does not respond after a period of inactivity, please wake it up by pressing one of the buttons on the mouse or moving the mouse around.



## Using the Mouse

- (A) Plug the USB receiver into an available USB port on your computer.
  - (B) Press and release the setup key on the receiver.
  - (C) Press the setup key on the bottom of the mouse.
- You are now ready to use the mouse.



NOTE: while the mouse is functioning, optical light is visible to the naked eye. be careful not to look directly into the emitter hole while the mouse is active.

## Mouse Power Management

- To power off the mouse, press and hold the setup key on the bottom of the mouse for 3 seconds. Press and hold the setup key for 1 second to turn on the mouse.
- During the operation, the Power Saving feature allows the mouse to go into “sleep mode” after 8 minutes of inactivity. Click any mouse button to reactivate the mouse.

## **Technical Support**

For technical questions, please visit:

<b>US</b>	Internet: <a href="http://www.targus.com/support.asp">www.targus.com/support.asp</a>
<b>Australia</b>	Internet: <a href="http://www.targus.com/au">www.targus.com/au</a> Email: <a href="mailto:infoaust@targus.com">infoaust@targus.com</a> Telephone: 1800-641-645
<b>New Zealand</b>	Telephone: 0800-633-222

## **Product Registration**

Targus recommends that you register your Targus accessory shortly after purchasing it. Go to: <http://www.targus.com/registration.asp>. You will need to provide your full name, email address, phone number, and company information (if applicable).

## **Warranty**

Targus warrants this product to be free from defects in materials and workmanship for one year. If your Targus accessory is found to be defective within that time, we will promptly repair or replace it. This warranty does not cover accidental damage, wear and tear, or consequential or incidental loss. Under no conditions is Targus liable for loss of, or damage to a devices nor loss of, or damage to, programs, records, or data; nor any consequential or incidental damages, even if Targus has been informed of their possibility. This warranty does not affect your statutory rights.

## **Regulatory Compliance**

This device complies with Part 15 of the FCC Rules. Operation is subject to the following two conditions: (1) This device may not cause harmful interference, and (2) This device must accept any interference received, including interference that may cause undesired operation.

## **FCC Statement Tested to Comply**

This equipment has been tested and found to comply with the limits of a Class B digital device, pursuant to Part 15 of the FCC Rules. These limits are designed to provide reasonable protection against harmful interference in a residential installation. This equipment generates, uses, and can radiate radio frequency energy and if not installed and used in accordance with the instructions, may cause harmful interference to radio communications. However, there is no guarantee that interference will not occur in a particular installation. If this equipment does cause harmful interference to radio or television reception, which can be determined by turning the equipment off and on, the user is encouraged to try to correct the interference by one or more of the following measures:

- Reorient or relocate the receiving antenna;
- Increase the separation between the equipment and receiver;
- Connect the equipment into an outlet on a circuit different from that to which the receiver is connected;
- Consult the dealer or an experienced radio/TV technician for help.

Changes or modifications not authorized by the party responsible for compliance could void the user's authority to operate this product.

## **Declaration of Conformity**

Hereby, Targus, declares that this device is in compliance with the essential requirements and other relevant provisions of Directive 1999/5/EC.

Microsoft, Windows, and Windows Vista are either registered trademarks or trademarks of Microsoft Corporation in the United States and/or other countries. All trademarks and registered trademarks are the properties of their respective owners. All rights reserved.

Features and specifications subject to change without notice. © 2007, Targus Group International, Inc. and Targus, Inc., Anaheim, CA 92806 USA.